



# VIPER® M2X L2X - 20KN

## LIGHTWEIGHT - COMPACT

### MAKE THE MOST OF YOUR TALENT

# 01

## CRIMPING UNDER CONTROL

The light LED ring indicates if your crimping is correct or not and lights up the work area at 360°.



# 02



## ALWAYS HAVE THE RIGHT BATTERY

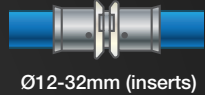
18V - 2,0Ah battery compatible with more than 280 tools from CAS partners (Cordless Alliance System). Issued from Metabo® technology, autonomy and lifetime are optimized.



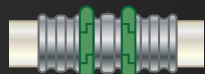
Ø12-28 mm



Ø12-28 mm



Ø12-32mm (inserts)  
Ø40mm (mini-jaws)



Ø12-32mm (inserts)  
Ø40mm (mini-jaws)



M2X

L2X



# 03

## STAY CONNECTED

With "VIR-APP":

- Read the number of crimpings already done or up to the next maintenance.
- Customize your machine (brightness, time before standby, ...).
- Send job report to your customer.

**253550** M2X + 2 BATTERIES (WITHOUT MOTHER JAW)

**253551** M2X + 2 BATTERIES + MOTHER JAW

**253570** L2X + 2 BATTERIES (WITHOUT MOTHER JAW)

**253571** L2X + 2 BATTERIES + MOTHER JAW

**SETS WITH INSERTS** ASK YOUR DEALER

### THE VIRAX SOLUTION

#### INSERTS



OR

#### MINI-JAWS



Conception graphique : © CHRISTOPHE TOUSSAINT



#VIRAXFRENCHMANUFACTURER



YouTube

